

Handle Legs

Zinc Die Casting, for Tubular Handles Ø 28, Straight

SPECIFICATION

Type

- Type **A**: Mounting from the back (threaded blind bore)

Handle leg

Zinc die casting

Powder coated

- Black, RAL 9005, textured finish **SW**
- Silver, RAL 9006, textured finish **SR**

Grub screw with plastic pivot

GN 913.3-M4-6-KU (see page 912)

Steel, blackened

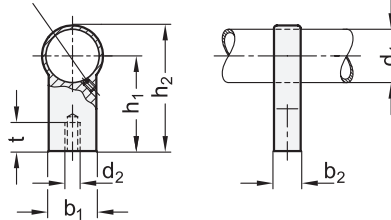


INFORMATION

Handle legs GN 333.9 can be used for longer tubes or higher loads of tubular handles.

They can be used for tube Ø 28 of the tubular handles GN 333 (see page 498), GN 333.1 (see page 496), GN 333.2 (see page 500) and GN 333.3 (see page 489).

Grub screw with plastic pivot



GN 333.9

Description	d ₁	d ₂	b ₁	b ₂	h ₁	h ₂	t min.	△
GN 333.9-28-A-SW	28	M 8	25	14	50	66	15	88
GN 333.9-28-A-SR	28	M 8	25	14	50	66	15	88